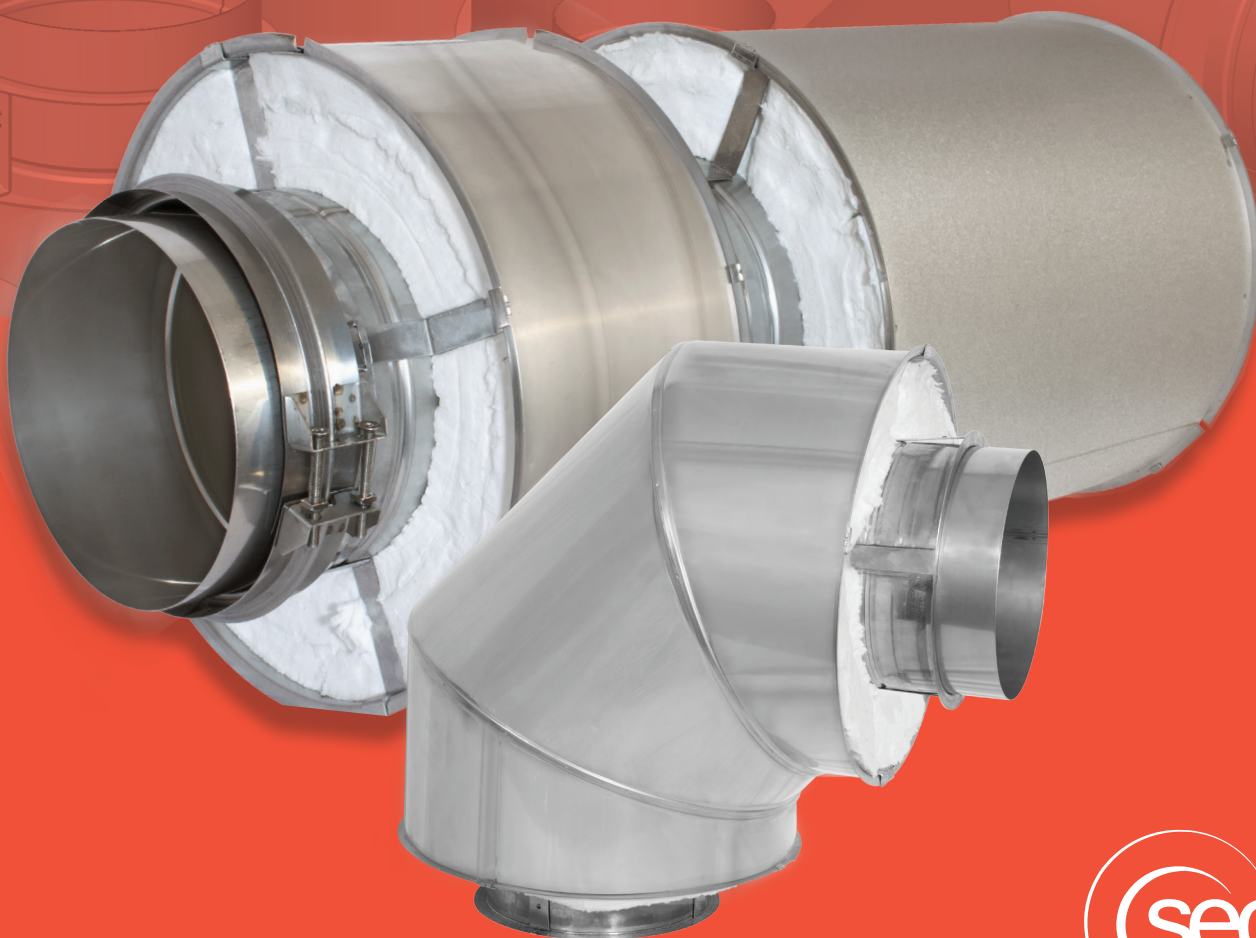


Secure Stack[®] Pro

Secure Stack[®] Pro

Models CAX1, CIX1, CIX2, and CIX4, Modular Double-Wall Positive Pressure Chimney for Boiler Breeching & Stack, Engine Exhaust, and Grease Duct.



Secure Stack® Pro

Models CIX1, CIX2, CIX3, and CAX1. Modular Double-Wall Positive Pressure Chimney for Boiler Breeching, Stack and Engine Exhaust.

Applications

Secure Stack Pro is available in the following configurations:

CAX1: 1" air insulated

CIX1: 1" insulated

CIX2: 2" insulated

CIX4: 4" insulated

Applications include: Low and High-Pressure Steam Boilers; Diesel and Turbine Exhaust; Building Heating Equipment. Industrial Furnaces; Processing Equipment; Kilns and Ovens.

Materials and Construction

Inner Wall Material Thickness

5" - 18" .035" Laser welded, 304 or 316

20" - 36" .035" Plasma welded, 304 or 316

Outer Wall Material Thickness

5" - 12" .024" Laser welded, 304 or 441, Galvalume

14" - 36" .024" Pittsburg Lock, 304 or 441, Galvalume

Diameters

5"-36"

Warranty

15 Years

Listings

USA:

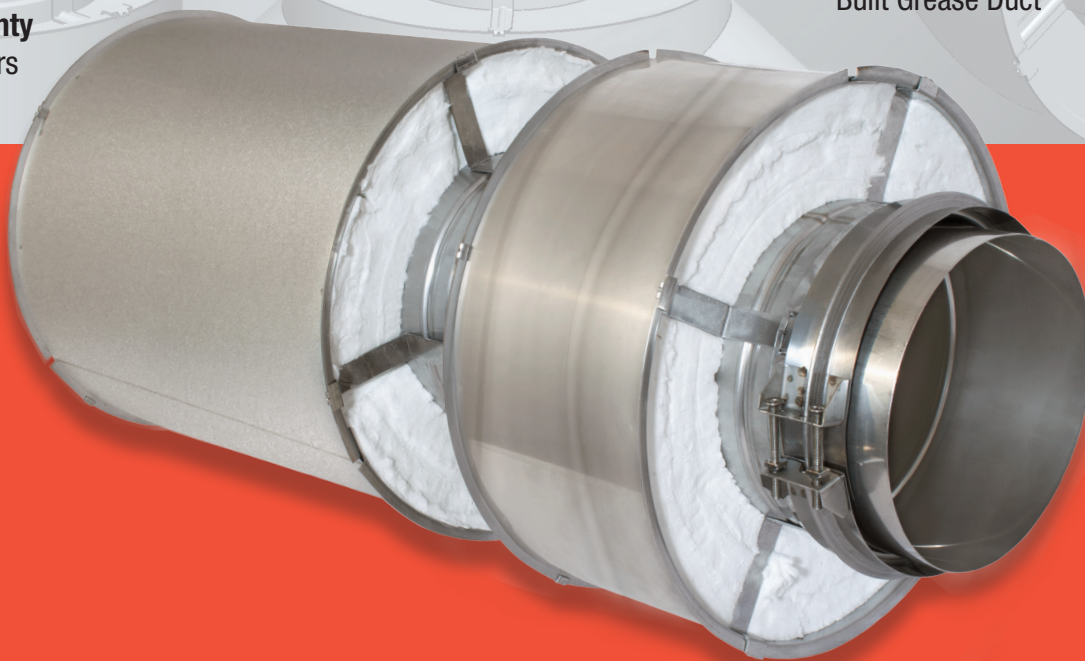
- UL 103, 60-in. Positive Pressure and 1400°F Building Heating Appliance Chimney
- Type HT listing, for solid fuel application (only for Models CIX1, CIX2, CIX4, for diameter 5" to 24")
- UL 1978 Standard for Grease Duct

Canada:

- ULC/ORD C959 540°C (1000°F) and 760°C (1400°F) rating
- ULC S604, Type A chimney
- CAN/ULC S662 Standard for Factory-Built Grease Duct

Secure Stack®

Pro



APAMCIXPRO LS477_Sales Sheet_Secure Stack Pro_05-25-17_V2

www.securitychimneys.com 800-361-4909 (US) 800-667-3387 (Canada) Security Chimneys International © 2016, 2017
Information published in all Security Chimneys literature is current at time of publication and is subject to change without notice.